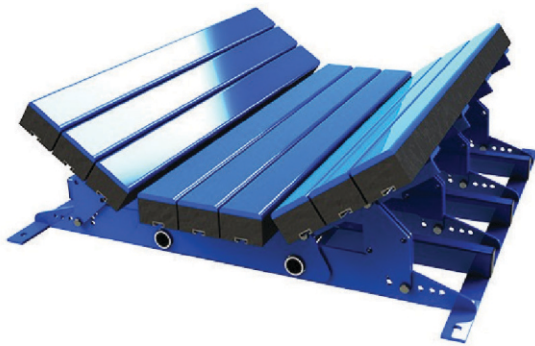


FORGLIDE: IMPACT BARS

FORGLIDE: Impact Bars are designed to absorb impact at the loading points of conveyor belt installations, where a combination of high energy absorption and low friction is needed.

Due to ease of installation, these Impact Bars replace the conventional idler sets. The top cover is made of an Ultra High Molecular Weight Polyethelene, which gives these Impact Bars a vey low friction top surface. The middle portion is of a high quality energy absorbing rubber, which acts as a shock absorber at the loading zones of conveyor installation. These Impact Bars are also available with tapered ends on one side or on both sides to prevent any damage to the conveyor belt.



FORGLIDE: Impact Bars come with a 'T-Track' fastening system, which enables variable fixing points throughout the length of the Bars. A 'T-Track' fastening system also makes the element adaptable to any cradle arrangement, which the conveyor installation might have.

The Impact Bars come in standard lengths of 1220mm, 1500mm and 1524mm with top cover of UHMWPE and are supplied with 8 bolts and Nylock nuts as a standard accessory.

Special sizes of Impact Bars are also manufactured on special requests.

IMPACT BAR

With Top layer of UHMW-PE and Al. Profile for T Bolt having rubber hardness of 60 Deg. A and 45 Deg.A

- 50mm X 100mm X 1220mm - 10mm
- 50mm X 100mm X 1500mm - 10mm
- 55mm X 100mm X 1220mm - 10mm
- 55mm X 100mm X 1500mm - 10mm
- 55mm X 100mm X 1800mm - 10mm

- 75mm X 100mm X 1220mm - 10mm
- 75mm X 100mm X 1220mm - 12.7mm
- 75mm X 100mm X 1220mm - 25.4mm
- 75mm X 100mm X 1800mm - 10mm

- 100mm X 100mm X 1220mm - 10mm
- 100mm X 100mm X 1220mm - 12.7mm
- 100mm X 100mm X 1220mm - 25.4mm

- 75mm X 100mm X 1524mm - 10mm
- 75mm X 100mm X 1524mm - 12.7mm
- 75mm X 100mm X 1524mm - 25.4mm

- 100mm X 100mm X 1524mm - 10mm
- 100mm X 100mm X 1524mm - 12.7mm
- 100mm X 100mm X 1524mm - 25.4mm

