

CHEVRON CONVEYOR BELTS

HIGH INCLINE CARRYING / INTEGRALLY VULCANISED CLEATS

Smooth surface conveyor belts typically allow a maximum inclination of about 20°, depending on the material. For steeper inclines, *Chevron Cleated Belts* are used. These belts feature integrally vulcanized rubber profiles made from highly abrasion-resistant compounds in 45–50 Shore or 60 Shore hardness. Designed to operate without special idlers, the chevron profile ensures compatibility with standard conveyor systems and allows smooth travel over flat return idlers. At Forech, we emphasize the importance of customized solutions in this key segment, recognizing their critical role in material handling. We continuously enhance our offerings by developing specialized cover types tailored to specific applications, ensuring reliable performance and long service life across a range of industrial conditions.



APPLICATIONS



Open-pit mining



Lignite and hard rock mining



Cement Industry



Steel Industry



Aggregates



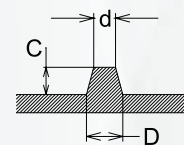
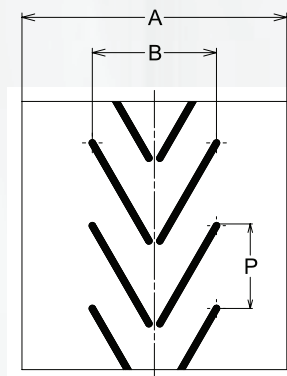
Mineral processing plants

PROFILE SELECTION CRITERIA

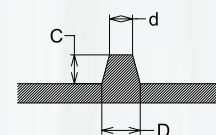
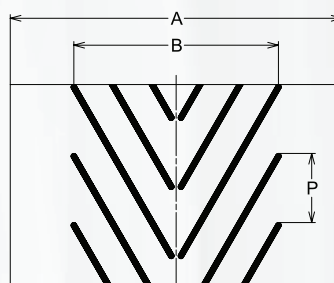
Type of material	Material example	Max. angle of inclination		
		Height of cleats		
		h(mm): 16	h(mm): 25	h(mm): 32
Powdery	Flour, lime etc	25°	28°	30°
Loose Flowing	Grains: corn, barley, wheat, rye, dray sand	20/25°	25/30°	25/30°
Loose Rolling	Gravel, ground stone	25°	28°	30°
Sticky	Wet sand, ash, wet loam	30/35°	35/40°	40/45°
Packed	Sacks, jute sacks, paper sacks	30/35°	35/40°	35/40°

RANGE OF PROFILES

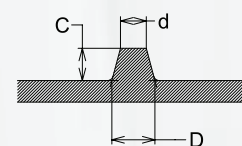
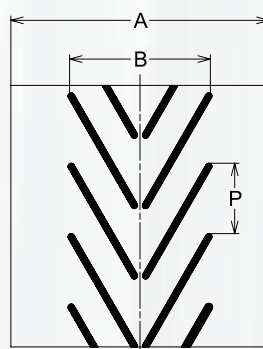
Cleat Type	FHC-15-1
Belt Width (mm) A	600-800
Cleat Width (mm) B	385
Cleat Pitch (mm) P	250
Cleat Height (mm) C	15
Cleat Thickness (mm) D	20
Cleat Thickness (mm) d	12



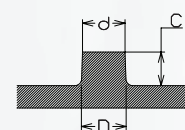
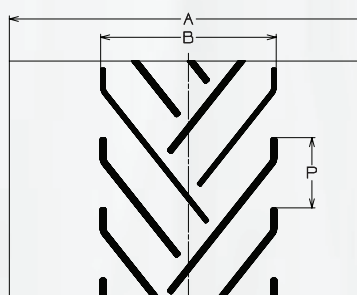
Cleat Type	FHC-15-2
Belt Width (mm) A	900-1200
Cleat Width (mm) B	750
Cleat Pitch (mm) P	250
Cleat Height (mm) C	15
Cleat Thickness (mm) D	20
Cleat Thickness (mm) d	12



Cleat Type	FG-15-1
Belt Width (mm) A	600-800
Cleat Width (mm) B	436
Cleat Pitch (mm) P	218
Cleat Height (mm) C	15
Cleat Thickness (mm) D	20
Cleat Thickness (mm) d	12

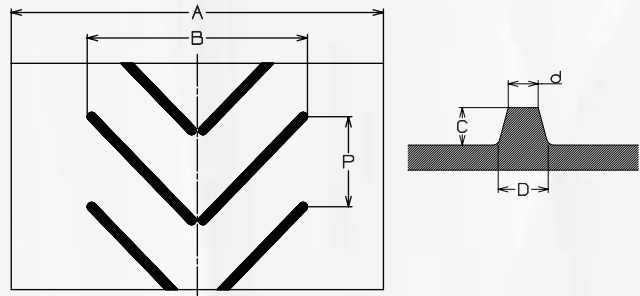


Cleat Type	FGH-15
Belt Width (mm) A	900-1400
Cleat Width (mm) B	750
Cleat Pitch (mm) P	300
Cleat Height (mm) C	15
Cleat Thickness (mm) D	20
Cleat Thickness (mm) d	19

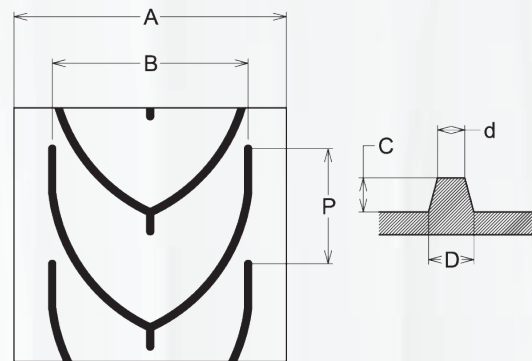


RANGE OF PROFILES

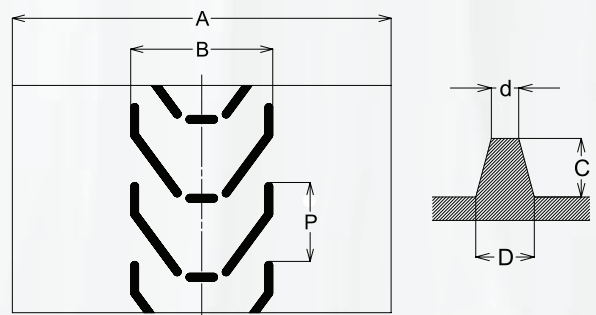
Cleat Type	C-15-P600
Belt Width (mm) A	900-1200
Cleat Width (mm) B	610
Cleat Pitch (mm) P	252
Cleat Height (mm) C	15
Cleat Thickness (mm) D	20
Cleat Thickness (mm) d	12



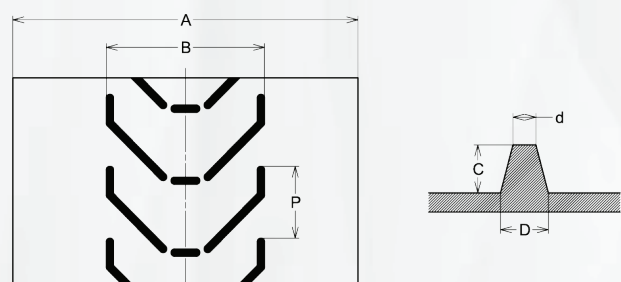
Cleat Type	FHY-15
Belt Width (mm) A	700-900
Cleat Width (mm) B	575
Cleat Pitch (mm) P	338
Cleat Height (mm) C	15
Cleat Thickness (mm) D	20
Cleat Thickness (mm) d	12



Cleat Type	FHC-25-1
Belt Width (mm) A	600-800
Cleat Width (mm) B	450
Cleat Pitch (mm) P	250
Cleat Height (mm) C	25
Cleat Thickness (mm) D	25
Cleat Thickness (mm) d	12

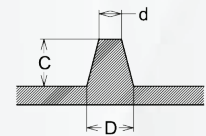
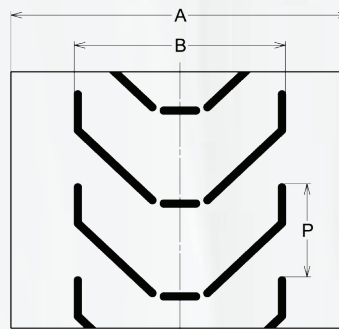


Cleat Type	FHC-25-2
Belt Width (mm) A	600-800
Cleat Width (mm) B	550
Cleat Pitch (mm) P	250
Cleat Height (mm) C	25
Cleat Thickness (mm) D	25
Cleat Thickness (mm) d	12

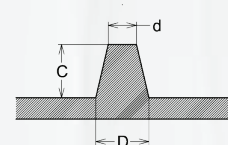
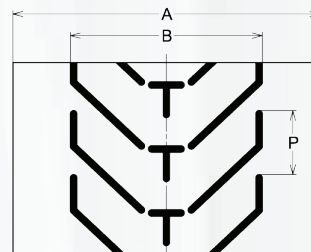


RANGE OF PROFILES

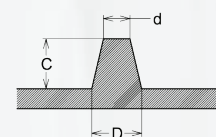
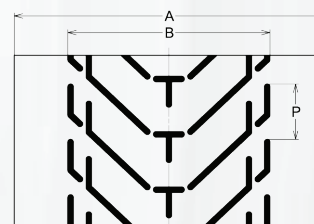
Cleat Type	FHC-25-3
Belt Width (mm) A	900-1200
Cleat Width (mm) B	750
Cleat Pitch (mm) P	330
Cleat Height (mm) C	25
Cleat Thickness (mm) D	25
Cleat Thickness (mm) d	12



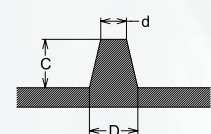
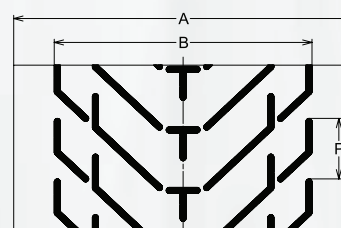
Cleat Type	FHC-25-4
Belt Width (mm) A	800-1000
Cleat Width (mm) B	750
Cleat Pitch (mm) P	250
Cleat Height (mm) C	25
Cleat Thickness (mm) D	25
Cleat Thickness (mm) d	13.3



Cleat Type	FHC-25-5
Belt Width (mm) A	1000-1200
Cleat Width (mm) B	915
Cleat Pitch (mm) P	250
Cleat Height (mm) C	25
Cleat Thickness (mm) D	25
Cleat Thickness (mm) d	13.3

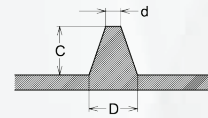
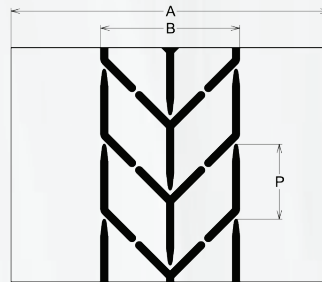


Cleat Type	FHC-25-6
Belt Width (mm) A	1000-1400
Cleat Width (mm) B	1065
Cleat Pitch (mm) P	250
Cleat Height (mm) C	25
Cleat Thickness (mm) D	25
Cleat Thickness (mm) d	13.3

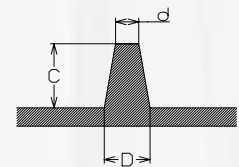
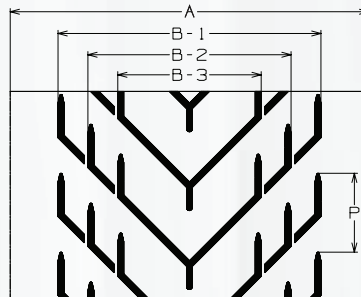


RANGE OF PROFILES

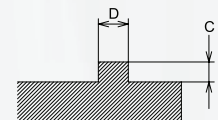
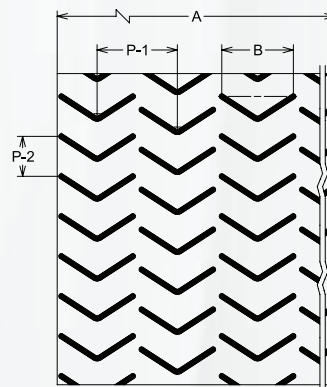
Cleat Type	FHC-32
Belt Width (mm) A	800-1200
Cleat Width (mm) B	600
Cleat Pitch (mm) P	330
Cleat Height (mm) C	32
Cleat Thickness (mm) D	32
Cleat Thickness (mm) d	10



Cleat Type	FHC-35
Belt Width (mm) A	650-1400
Cleat Width (mm) B-1	1100
Cleat Width (mm) B-2	850
Cleat Width (mm) B-3	600
Cleat Pitch (mm) P	330
Cleat Height (mm) C	35
Cleat Thickness (mm) D	25
Cleat Thickness (mm) d	12



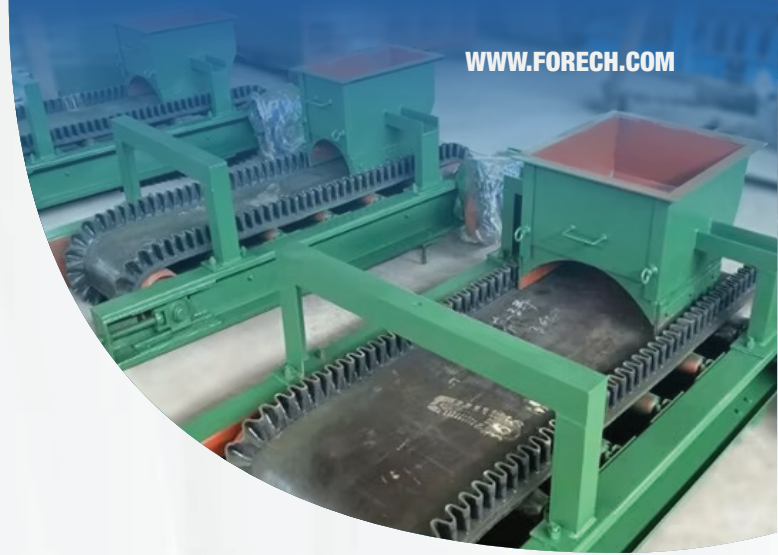
Cleat Type	V- CLEAT
Belt Width (Inch) A	42"/48"/60"/72"
Cleat Width (Inch) B	5.375"
Cleat Pitch (Inch) P-1	6.025"
Cleat Height (Inch) P-2	3"
Cleat Thickness (Inch) C	0.25"
Cleat Thickness (Inch) D	0.375"



SPECIAL PROFILE AND WEIGH FEEDER BELTS

Rough Top Conveyor Belt; Herringbone Pattern Conveyor Belt; and a host of other options are available in open ends and endless forms. Multi-V constructions with ¼ inch height are also available.

Forech manufactures special profile weigh feeder belts for use in thermal power plants & cement factories. These are highly calibrated seamless belts with side profile and centre guides.



ADVANTAGES

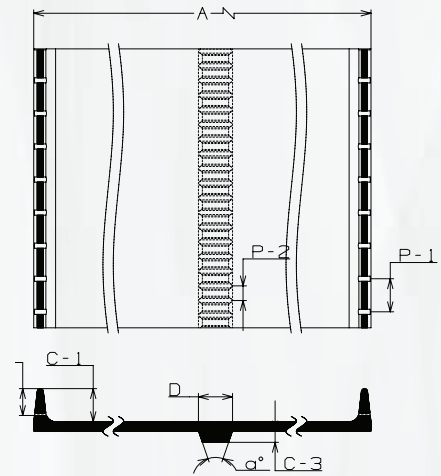
FORECH offers a wide range of Profiled Chevron Cleated Belts, which make increased angles of 30° to 40° inclination possible. The prime advantage of high angle of inclination is that LESS SPACE is needed to reach the desired conveying height. Chevron Cleated Belts offered by FORECH-HILTON comply with INTERNATIONAL STANDARDS of rubber grades requirements.

RANGE AND TYPES OF PROFILE BELTS

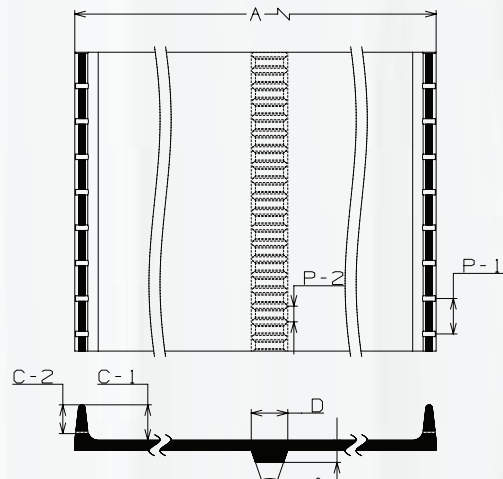
S.No.	Parameters	Range
1	Belt Width	600-1800mm
2	Type of Fabric	Polyamide-Polyamide (NN), Polyester-Polyamide (EP), Aramid construction
3	Profile/Cleat Height	6.35 to 32mm
4	No of Plies	1-5
5	Edge	Normally Cut edge construction
6	Working Tension	250 - 1600 kN/m
7	Cover Grades	General Purpose (GP), HR, FR, OR, etc (special grade available based on customer requirement)

RANGE OF PROFILES

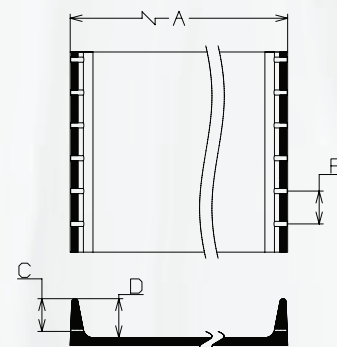
Cleat Type	Feeder Belt - 838
Belt Width (mm) A	838
Pitch (mm) P-1	32
Pitch (mm) P-2	14.2
Rib Height (mm) C-1	32
Rib Height (mm) C-2	26
Bottom Wedge Height (mm) C-3	11
Bottom Wedge Angle - a	38°
Bottom Wedge Thickness (mm) D	33



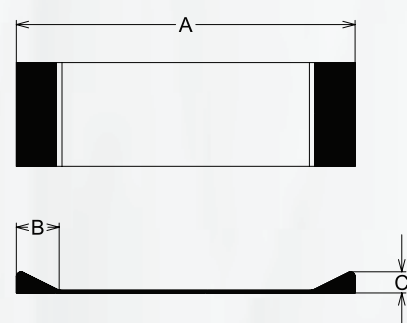
Cleat Type	Feeder Belt - 1168
Belt Width (mm) A	1168
Pitch (mm) P-1	32
Pitch (mm) P-2	14.2
Rib Height (mm) C-1	38
Rib Height (mm) C-2	32
Bottom Wedge Height (mm) C-3	14
Bottom Wedge Angle - a	38°
Bottom Wedge Thickness (mm) D	44



Cleat Type	Feeder Belt - 1270
Belt Width (mm) A	1270
Pitch (mm) P	34.5
Rib Height (mm) C	32
Rib Height (mm) D	38

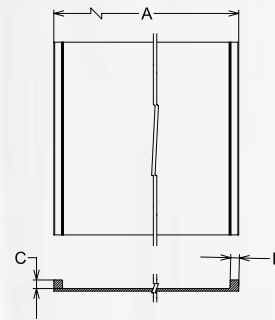


Cleat Type	EBS Belt
Belt Width (mm) A	800/1414
Cleat Width (mm) B	100
Cleat Height (mm) C	50

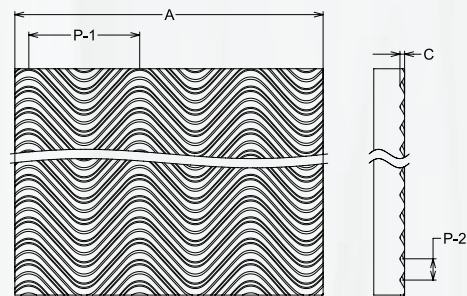


RANGE OF PROFILES

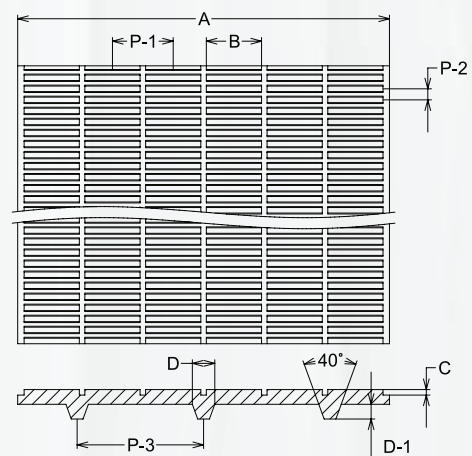
Cleat Type	Paper Belt
Belt Width (mm) A	1070/1470
Rib Height (mm) C	20
Rib Width (mm) D	20



Cleat Type	Wavy Top Belt
Belt Width (mm) A	500-800
Pitch (mm) P-1	36
Pitch (mm) P-2	6.9
Depth (mm) C	1.5



Cleat Type	Diverter Belt
Belt Width (mm) A	202
Cleat Width (mm) B	30
Cleat Pitch (mm) P-1	33
Cleat Pitch (mm) P-2	6
Cleat Pitch (mm) P-2	68.7
Cleat Depth (mm) C	3
Cleat Depth (mm) D-1	8
Cleat Thickness (mm) D	12.2



Cleat Type	Magnetic Sep. Belt
Belt Width (mm) A	1200
Cleat Width (mm) B	908
Cleat Pitch (mm) P	505
Cleat Height (mm) C	25
Cleat Thickness (mm) D	110
Cleat Thickness (mm) d	12

